



OLYMPIA GREEK TAVERNA
145 HIGHWAY 33 WEST KELOWNA B.C. V1X 1X6
TEL: (250) 765-0484
olympia@shawbiz.ca www.olympiataverna.com

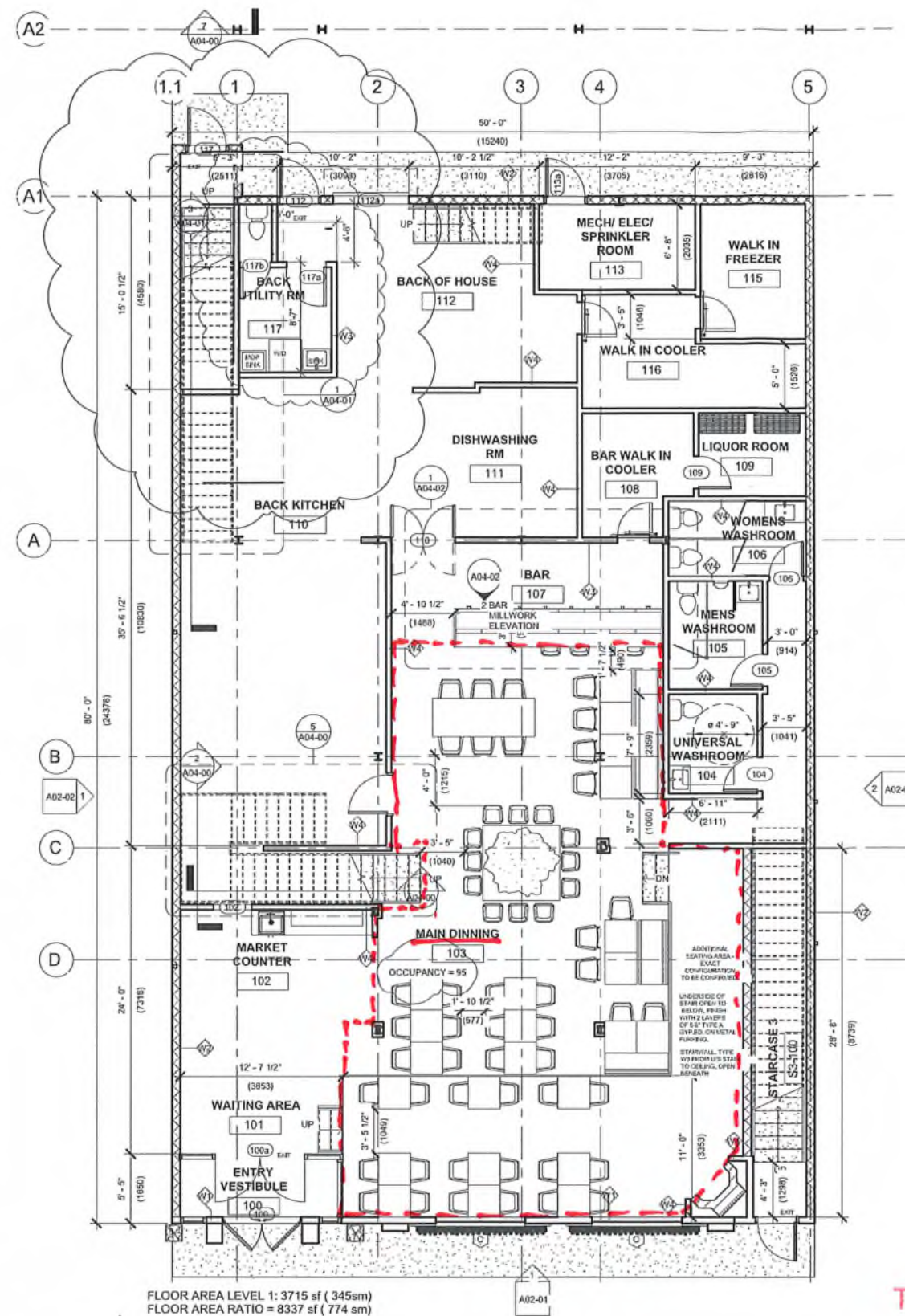
March 14, 2025

Re: Letter of Rational

To whom this may concern,

We are applying for an Entertainment Endorsement for our Liquor License # 084379. The rational behind this is that we want to have belly dancing on the week ends which last for about 45 minutes on Friday and Saturday nights and our customers enjoy getting up and dancing with the belly dancer. Also we are hoping to bring in some live Greek music a few times a year where our customers can get up and dance. We feel that this a great way for people to experience Greek culture and have an enjoyable time out.

Thank-You
Mike Koutsantonis



The MAIN DINING has a net floor area of 195 m². The maximum occupant load shall be 95 persons, based on ARCH. DWG.

WALL TYPE SCHEDULE	
Type Mark	Description
W1	<varies> TYPICAL EXTERIOR WALL - SOUTH AND NORTH Ext. finish on (1/2" air gap and masonry anchors at stone façade)
W2	2HR RATED MASONRY EXTERIOR WALL • Exterior Paint finish on • 8" masonry wall • Fill cmu units with asbestos free vermiculite for sound and fire rating • 6 mil poly vapor barrier • 1/2" gypsum board interior finish on 7/8" hat channels
W3	1 HR DEMISING WALL OR STAIRWELL WALL • 12.7 mm (1/2") SHEETROCK FIRECODE C Core Gypsum Panels both sides-1 layer • 92 mm (3-5/8") 0.5 mm (25 gauge) steel studs 610 mm (24") o.c. • 75 mm batt insulation (3") SAFB • Resilient channel one side spaced 610 mm (24") o.c. • optional veneer plaster • UL Des U419 or U451
W4	TYPICAL NON-RATED INTERIOR WALL • 1/2" regular gypsum board • 3 5/8" steel studs, spaced per structural • 1/2" regular gypsum board • Interior finish as scheduled on each side

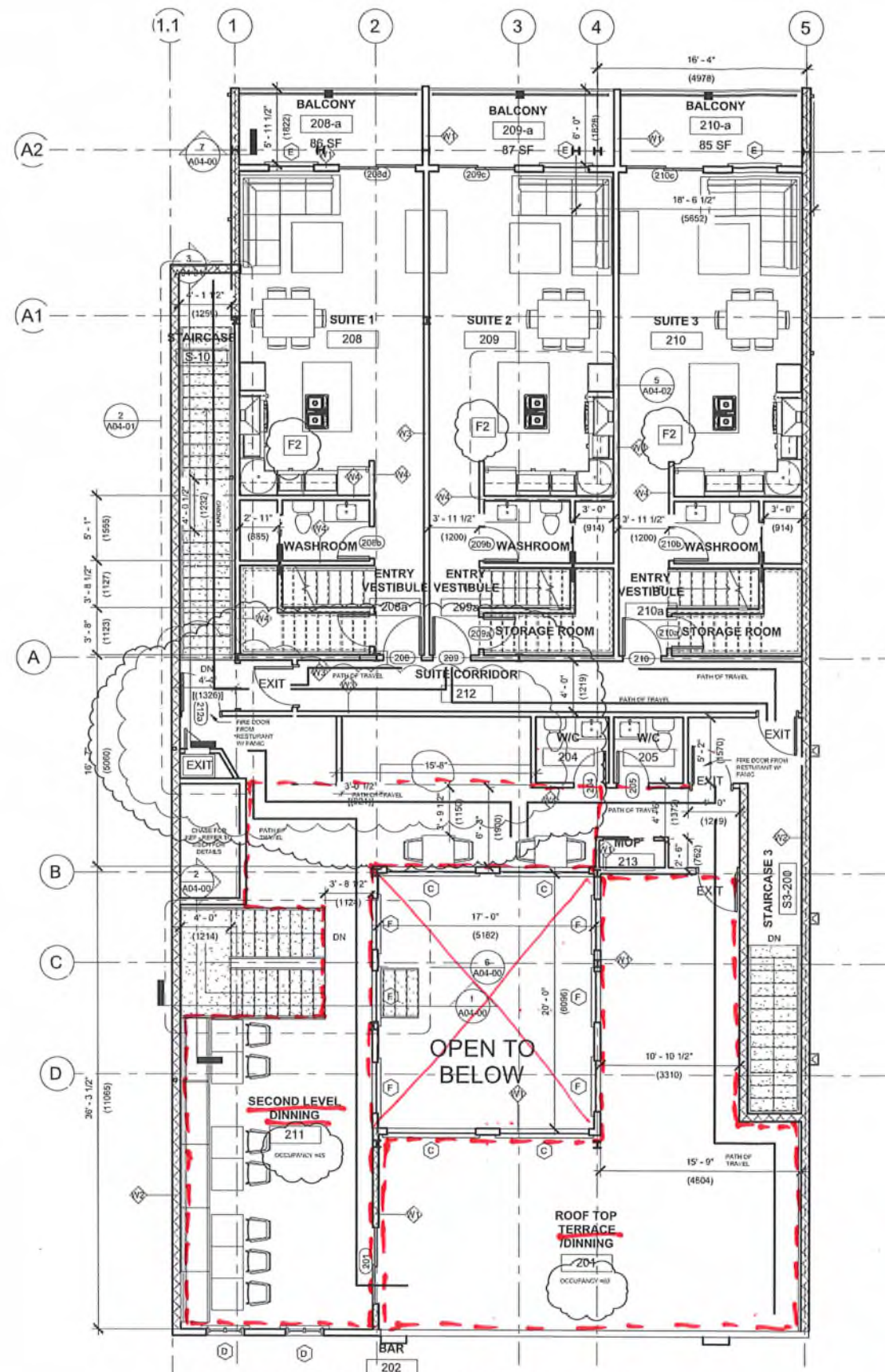
FLOOR/ CEILING TYPE SCHEDULE	
Type Mark	Description
F1	<varies> • Scheduled floor finish on • 6" conc. Slab on grade on • 6 mil poly vapor barrier on • Compacted gravel base
F2	2 HR RATED COMPOSITE FLOOR • light fixture and speakers optional • 50 mm (2") concrete on riblath over bar joists • UL263- firetek fire coating on joists to 2 hr rating.

NOTE: REFER TO STRUCTURAL FOR FLOOR AND DECKING DETAIL.

GP 16527
Reviewed
by City of Kelowna
Inspection Services
2024/02/14

— W/L OK FOR 200 ppl.

COORDINATING PROFESSIONALS		
<p>MBC Group Suite 135, 7560-12 St. SE Calgary AB, T2H 2S5 Cell: 597-892-7663 Email: antoine.caron@mbc-group.ca Web: www.MBC-Group.ca</p>		
ARCHITECT		
<p>M O GEORGE, ARCHITECT Mobolanle O George, B Arch. M O George Architect P O Box 22013, Polard Meadows Edmonton, AB T6L 0A1 Cell: 403-307-0040 Email: mogdpr@gmail.com Web: www.Mogarch.com</p>		
CONSULTANT		
PERMIT STAMP		
SEAL		
<p>THIS DRAWING, AS AN INSTRUMENT OF SERVICE, IS THE PROPERTY OF MBC GROUP AND M O GEORGE ARCHITECT. THE COPYRIGHT BY THE SAME BEING RESERVED TO THEM, NO REPRODUCTION IS ALLOWED WITHOUT THE PERMISSION OF MBC GROUP AND M O GEORGE ARCHITECT AND WHEN MADE MUST BEAR ITS NAME. THIS DRAWING IS NOT TO BE SCALED. THE CONTRACTOR IS TO VERIFY DIMENSIONS AND DATA NOTED HEREIN WITH THE CONDITIONS ON SITE AND IS RESPONSIBLE FOR REPORTING ANY DISCREPANCY TO MBC GROUP AND M O GEORGE ARCHITECT FOR ADJUSTMENT.</p>		
No.	Description	Date
1	ISSUED FOR REVIEW	06-03-2021
2	ISSUED FOR DEVELOPMENT PERMIT	01-05-2021
3	ISSUED FOR DEVELOPMENT PERMIT	07-03-2021
4	ISSUED FOR DEVELOPMENT PERMIT	15-10-2021
5	ISSUED FOR DEVELOPMENT PERMIT	11-09-2021
6	ISSUED FOR DEVELOPMENT PERMIT	07-17-2021
7	ISSUED FOR BUILDING PERMIT	11-20-2021
8	AS BUILT FOR 111 AND DRIVING OCCUPANCY	02-12-2021
PROJECT		
OLYMPIA TAVERN		
DRAWING TITLE		
LEVEL 1 FLOOR PLAN		
DRAWING ISSUE		
ISSUED FOR BUILDING PERMIT		
Project number	ENG-20850	
Date	11-26-2021	
Drawn by	JJA	
Checked by	MOG	
A01-02		
Scale	3/16" = 1'-0"	



NOTE: EACH UNIT HAS APPROX. 175sqft= 16SM TOTAL IN BALCONY SPACE.

FLOOR AREA OF LEVEL 2: 2972 sf (276sm)
FLOOR AREA RATIO = 8337 sf (774 sm)

① Level 2
3/16" = 1'-0"

WALL TYPE SCHEDULE	
Type Mark	Description
W1	<varies> TYPICAL EXTERIOR WALL - SOUTH AND NORTH Ext. finish on (1/2" air gap and masonry anchors at stone façade)
W2	2HR RATED MASONRY EXTERIOR WALL • Exterior Paint finish on • 8" masonry wall • Fill cmu units with asbestos free vermiculite for sound and fire rating • 6 mil poly vapor barrier • 1/2" gypsum board interior finish on 7/8" hat channels
W3	1 HR DEMISING WALL OR STAIRWELL WALL • 12.7 mm (1/2") SHEETROCK FIRECODE C Core Gypsum Panels both sides-1 layer • 92 mm (3-5/8") 0.5 mm (25 gauge) steel studs 610 mm (24") o.c. • 75 mm batt insulation (3) SAFB • Resilient channel one side spaced 610 mm (24") o.c. • optional veneer plaster • UL Des U419 or U451
W4	TYPICAL NON-RATED INTERIOR WALL • 1/2" regular gypsum board • 3 5/8" steel studs, spaced per structural • 1/2" regular gypsum board Interior finish as scheduled on each side

FLOOR/ CEILING TYPE SCHEDULE	
Type Mark	Description
F1	<varies> • Scheduled floor finish on • 6" conc. Slab on grade on • 6 mil poly vapor barrier on • Compacted gravel base
F2	2 HR RATED COMPOSITE FLOOR • light fixture and speakers optional • 50 mm (2") concrete on riblath over bar joists • UL 263-COAT STEEL WITH FIRETEX FX5090-FIRE PROOFING COMPOUND. (SHERWIN WILLIAMS) CUT SHEET/MSDS ATTACHED.

GP 16527
Reviewed
by City of Kelowna
Inspection Services
8/

The 2ND LVL DINING has a net floor area of _____ m². The maximum occupant load shall be 45 persons, based on ARCH. DWG.

The TERRACE UNCOV. has a net floor area of _____ m². The maximum occupant load shall be 60 persons, based on ARCH. DWG.

COORDINATING PROFESSIONALS

Groupe **mbx** Group TM

MBC Group
Suite 135, 7560-12 St. SE Calgary AB, T2H 2S5
Cell: 597-502-7663
Email: antoine.caron@mbc-group.ca
Web: www.MBC-Group.ca

ARCHITECT **H O GEORGE, ARCHITECT**

Mobolante O George, B Arch.
M O George Architect
P O Box 22013, Pollard Meadows Edmonton, AB T6L 0A1
Cell: 403-307-0040
Email: moghpt@gmail.com
Web: www.Mogarch.com

CONSULTANT

PERMIT 51

SEAL

THIS DRAWING, AS AN INSTRUMENT OF SERVICE IS THE PROPERTY OF MBC GROUP AND H O GEORGE ARCHITECT. THE COPYRIGHT IN THE SAME BEING RESERVED TO THEM, NO REPRODUCTION IS ALLOWED WITHOUT THE PERMISSION OF MBC GROUP AND H O GEORGE ARCHITECT AND WHEN MADE MUST BEAR ITS NAME. THIS DRAWING IS NOT TO BE SCALED. THE CONTRACTOR IS TO VERIFY DIMENSIONS AND DATA NOTED HEREIN WITH THE CONDITIONS ON SITE AND IS RESPONSIBLE FOR REPORTING ANY DISCREPANCY TO MBC GROUP AND H O GEORGE ARCHITECT FOR ADJUSTMENT.

No.	Description	Date
1	ISSUED FOR REVIEW	06-10-2021
2	REVISED FOR DEVELOPMENT PERMIT	07-08-2021
3	REVISED FOR DEVELOPMENT PERMIT	07-08-2021
4	REVISED FOR DEVELOPMENT PERMIT	07-15-2021
5	REVISED FOR DEVELOPMENT PERMIT	07-15-2021
6	REVISED FOR DEVELOPMENT PERMIT	07-15-2021
7	REVISED FOR DEVELOPMENT PERMIT	07-15-2021
8	REVISED FOR DEVELOPMENT PERMIT	07-15-2021
9	REVISED FOR DEVELOPMENT PERMIT	07-15-2021
10	REVISED FOR DEVELOPMENT PERMIT	07-15-2021

PROJECT

OLYMPIA TAVERN

DRAWING TITLE

LEVEL 2 FLOOR PLAN

DRAWING ISSUE

ISSUED FOR BUILDING PERMIT

Project number ENG-20850
Date 11-26-2021
Drawn by JJA
Checked by MOG

A01-03

Scale 3/16" = 1'-0"

2021-12-16 1:12:20 PM